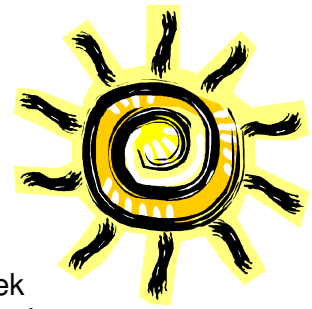


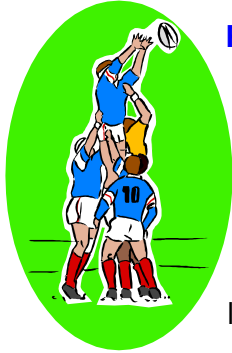


15<sup>th</sup> April 2010

# Newsletter



Welcome back after the Easter holiday and it's lovely to see some sunshine at last! An action packed term is planned with three different performances, three concerts, lots of sport including a whole creative week based on sport, school trips, PTA events, exciting visitors etc. All this together with plenty of hard work, assessments and progress to be made, ending with a sad but exciting time for Y6 as they move on to the next stage in their education.



### Rugby success

We are very proud of five members of Mr McCarthy's class, who played in the Bowdon RUFC team that won the final of a regional Under 8 Tag Rugby Tournament at Sale Sharks on Friday. Having got through six previous matches since October they won the final 3-1 against Macclesfield, playing on the Sale Sharks pitch at half time during their match against Saracens. Although not strictly a school success, Jack, Angus, Nancy, Rufus and Leo obviously played a significant part in this local team victory. Well done to you all.

### Assemblies this term

The Thursday class assemblies are at 9.05am and 10.10am as follows:

22 <sup>nd</sup> April	Violins	29 <sup>th</sup> April	Y2C
6 <sup>th</sup> May	Rec C	13 <sup>th</sup> May	Rec H
20 <sup>th</sup> May	Y1A	27 <sup>th</sup> May	Y1H
17 <sup>th</sup> June	Brass	24 <sup>th</sup> June	Y2B
1 <sup>st</sup> July	Y2W	8 <sup>th</sup> July	Y4B
22 <sup>nd</sup> July	Y6 Leavers		

### tbc Farewell Concert

Tickets are selling fast for the final tbc concert on Friday 23<sup>rd</sup> April at Bowdon Church. They cost £5 from the school office and a limited number are available for our school, so be quick and don't miss out. It was absolutely fantastic last year!

### Shine Walk

We are expecting six members of staff to have tired legs and feet on Monday morning. Mrs Cochrane, Mrs White, Miss Chappell, Mrs Jones, Miss Barclay and Mrs Horner will all have walked 26 and a bit miles around Manchester on Saturday night to fund raise for Cancer Research. Good luck everyone, we'll be thinking of you.



### Bowdon Church School Dark Day

This Friday is our Dark Day and the children will be able to 'Wear Something Bright and Turn Off The Light.' This is our chance to show how much we care about the world as a part of World Wildlife Fund's Earth Hour events. Further details were in the 25<sup>th</sup> March newsletter. The children may come to school in their own clothes on Friday and should aim to wear the brightest items in their wardrobe. Led by the Eco-Club we will be keeping the lights turned off and will be thinking about the simple steps that we can take to save energy. Travelling to school in a sustainable way would be a good start – walking, cycling, 'scooting', car sharing or using a school bus would be the preferred options.

- **PTA Comedy and Curry Night** – tickets are selling fast for what promises to be a great new event on May 8<sup>th</sup>. A ticket form is attached or is available in the entrance hall.



- **PTA Car Boot Sale** – People have already begun to ask about the Good as New Sale. The PTA have decided to hold a Car Boot Sale (including school uniform) instead this time and it will take place on Saturday 15<sup>th</sup> May 2 – 4pm. All pitches must be pre-booked and you will not be able to just arrive on the day. Pitches are £10 and booking forms are available from the school office or from Linda Hill on 07970 436240.

### Playground after school

We have become aware of an increasing number of families who are staying after school to 'play' and that parents are allowing their children to play on the infant field, in the play areas and in the Reception area. Although it would seem an ideal opportunity on nice days there are certain problems with this.

- Children taking part in after school sport must be kept safe and we can therefore not have people staying within the school grounds after school.
- Children are helping themselves to the Reception play equipment and this can not be allowed. The area outside the front door must be vacated by 3.15pm and the children may not play with the toys there.
- Children may not go into the adventure play areas without the supervision of a teacher from the school.
- Please keep your children off the infant field after school unless it is a very dry day.

Please be aware that our insurance does not cover children who are not participating in a school activity from ten minutes after the end of school and parents are responsible for their child's safety.



### Choir Performance

We are having various complications with this because of other school commitments – trips, bikeability, SATs etc. and we therefore need to fit in extra rehearsals. We are going to rehearse the 'Sound of Music' segment after school tomorrow and would be most grateful if those children could stay until 4.30pm.

On Monday we need all upper junior choir until 5pm, so that we can polish up the scenes not yet rehearsed on stage. We will try to fit other bits around Bikeability and then I need all upper junior choir to stay on

Thursday next week to 5pm too. All children should have received a costume letter and they need to bring these in on Friday next week.